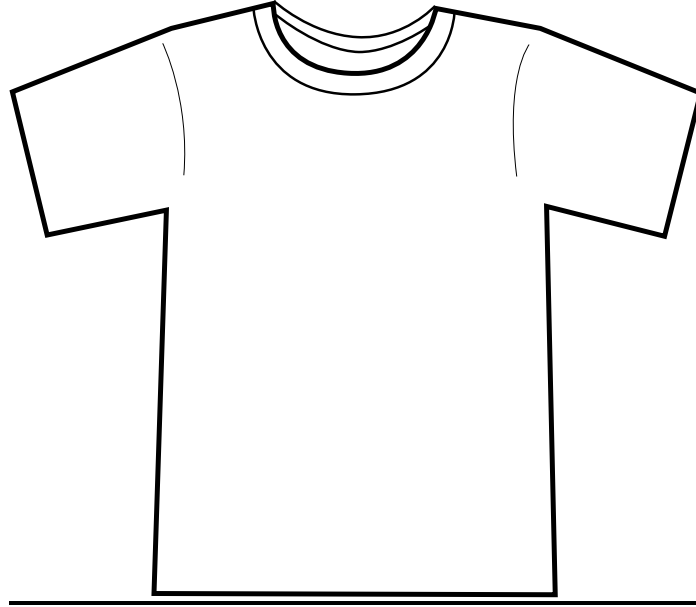


**29MP**  
**JERZEES**  
**50/50 Cotton/Poly Pocket T-Shirt**



**Descriptions**

- 5.6-ounce, 50/50 cotton/poly
- Seamless body with set-in sleeves
- Double needle, coverseamed ribbed collar
  - Taped shoulder-to-shoulder
  - Five-point left chest pocket
  - Hemmed sleeves and bottom

**Finished Garment Measurements**

<b>Size</b>	<b>S</b>	<b>M</b>	<b>L</b>	<b>XL</b>	<b>2XL</b>	<b>3XL</b>
Length	28	29	30	31	32	33
Width	18	20	22	24	26	28
Sleeve Length	16.75	17.75	18.75	19.75	20.75	21.75